

# CHOICE OF OPTICS. THE RIGHT LIGHT WHATEVER YOUR REQUIREMENTS.

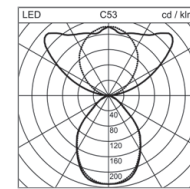
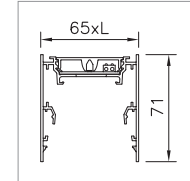
CHANNEL, THE CLASSIC AMONG ROW LIGHTING SYSTEMS, IS NOW AVAILABLE IN AN EVEN MORE STREAMLINED VERSION FEATURING DIRECT AND INDIRECT LIGHTING. APPLIED AS A PENDANT LUMINAIRE OR A ROW MOUNTING SYSTEM, THE NEW CHANNEL S UP BLENDS IN PERFECTLY WITH THE ARCHITECTURE AND SCORES HIGH WHEN IT COMES TO ENERGY EFFICIENCY, MEETING ALL STANDARDS THAT APPLY FOR WORKPLACE LIGHTING – WITHOUT COMPROMISE.



## CHANNEL S UP C-LED

### EXCEPTIONAL GLARE CONTROL

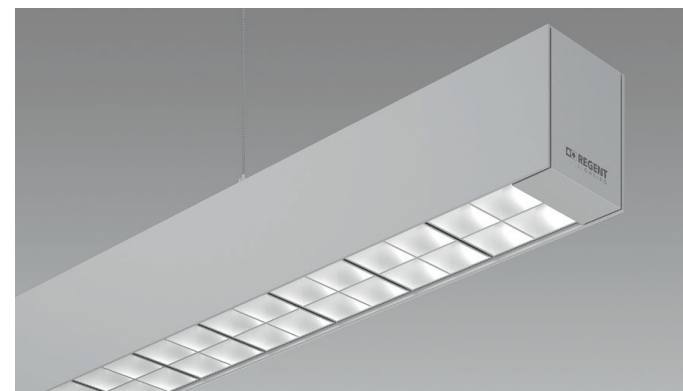
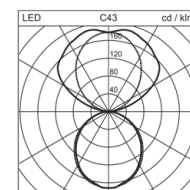
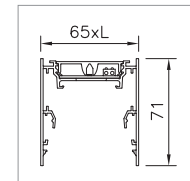
Direct light: 40%  
 Indirect light: 60% (wide beam)  
 3000 K, 4000 K, 2700–6500 K  
 UGR ≤ 16, L<sub>max</sub> ≤ 3000 cd/m<sup>2</sup>  
 4500 lm/1.2 m, 100 lm/W



## CHANNEL S UP LED

### ESPECIALLY ATTRACTIVE

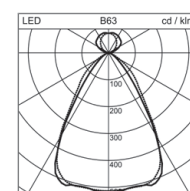
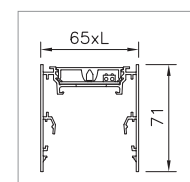
Direct light: 40%  
 Indirect light: 60% (wide beam)  
 3000 K, 4000 K, 2700–6500 K  
 Up to UGR ≤ 19  
 5100 lm/1.2 m, 109 lm/W



## CHANNEL S UP BOOST LED

### HIGHLY EFFICIENT

Direct light: 80%  
 Indirect light: 20% (wide beam)  
 3000 K, 4000 K  
 UGR ≤ 19, L<sub>max</sub> ≤ 3000 cd/m<sup>2</sup>  
 5300 lm/1.2 m, 109 lm/W

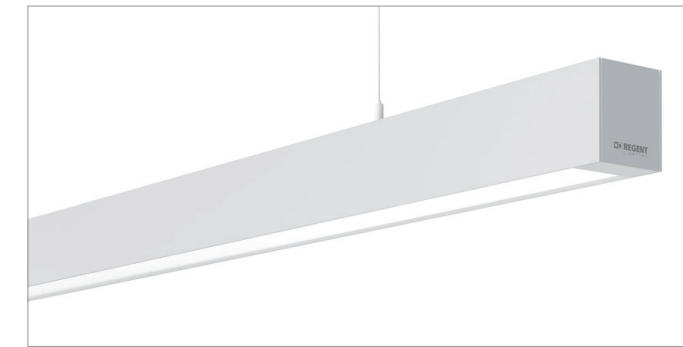


## CHANNEL S UP RANGE

### PENDANT LUMINAIRE

COMPLETELY PRE-ASSEMBLED

Length  
 1250 mm  
 1550 mm  
 2450 mm  
 3650 mm via channel lighting system



### CHANNEL LIGHTING SYSTEM

MOUNTING ACCESSORIES TO BE ORDERED SEPARATELY

#### SUPPORT PROFILE

- INITIAL/END SUPPORT PROFILE WITH PRE-INSTALLED INDIRECT LIGHT COMPONENT  
 Power connection to be provided on initial profile  
 2425 mm or 3625 mm

SUPPORT PROFILE FOR SINGLE MOUNTING WITH PRE-INSTALLED INDIRECT LIGHT COMPONENT  
 Must be equipped with a batten or blind cover  
 3650 mm

- CENTRAL SUPPORT PROFILE WITH PRE-INSTALLED INDIRECT LIGHT COMPONENT  
 2400 mm or 3600 mm

#### SYSTEM BATTEN

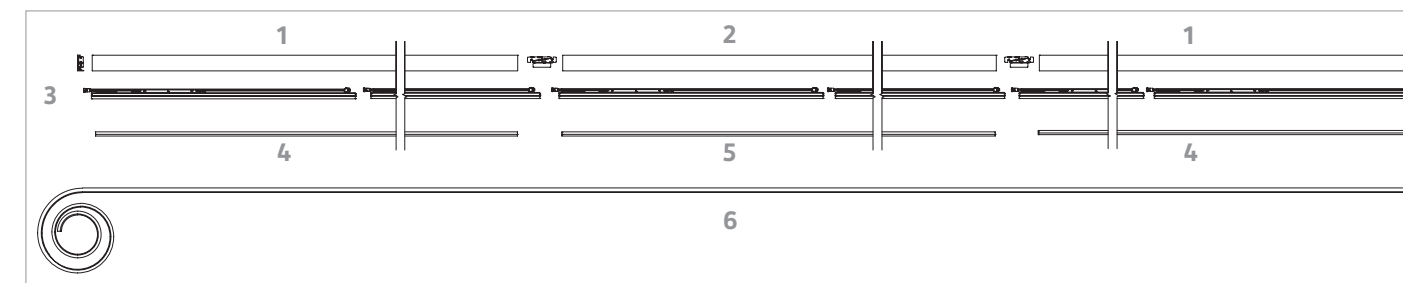
- SYSTEM BATTEN FOR DIRECT LIGHTING  
 1200 mm

#### OPTICS

- DIFFUSER CHANNEL S UP C-LED INITIAL/END MODULE  
 2406 mm or 3608 mm
- DIFFUSER CHANNEL S UP C-LED MITTE  
 2397 mm or 3596 mm
- DIFFUSER CHANNEL S UP LED  
 With RUN Technology, rollable, can be shortened on site  
 3605 mm, 7204 mm or 24002 mm

#### LOUVRE CHANNEL S UP BOOST LED

No additional optics necessary, louvres pre-installed on batten



For further information please visit [www.regent.ch/channel-s-up](http://www.regent.ch/channel-s-up)

Regent Beleuchtungskörper AG Dornacherstrasse 390 Postfach 139 CH-4018 Basel  
 T +41 61 335 51 11 F +41 61 335 52 01 info.bs@regent.ch [www.regent.ch](http://www.regent.ch)

Subject to technical modifications.  
 Regent assumes no liability for printing errors.  
 Edition 3, Mai 2019



532796.EN

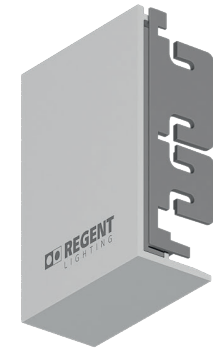


# CHANNELS UP

A NEW GENERATION OF EXEMPLARY STREAMLINED LUMINAIRES.

# CHANNEL S UP.

PERFECT SYMBIOSIS OF ERGONOMICS,  
ELEGANCE AND EFFICIENCY.



## DIRECT/INDIRECT

Three optical systems with different direct and indirect light components



## DESIGN

"S" as in streamlined, with a width of just 65 mm and a height of 71 mm

"Up" as in additional indirect light

Embedded end faces feature expansion compensation, guaranteeing an overall harmonious appearance

Support profile and end faces made of aluminium, natural anodised

No visible screws

## EFFICIENT

Efficient optics and high luminous flux reduce energy consumption and lower overall costs for the lighting system in the long run

Failure rate limited to an absolute minimum and extremely low maintenance costs thanks to long lifespan

Maximum ergonomics for the user

## SIMPLE TO INSTALL

Individual pendant luminaires pre-assembled (two suspension points only)

Integrated through-wiring

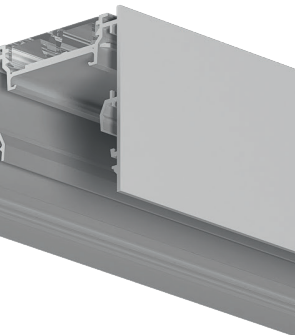
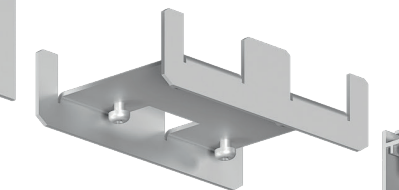
Suspension device can be positioned on the track as required

Reduced installation costs

Rectangular canopy (optional)

## VARIABLE

Available as an individual or system luminaire



### TECHNICAL DATA

Luminous efficacy: up to 109 lm/W

Glare control: up to UGR  $\leq$  16,  $L_{max} \leq$  3000 cd/m<sup>2</sup>

Colour temperatures: 4000 K, 3000 K, 2700–6500 K

Colour rendering: CRI  $\geq$  80

Maintained luminous flux: L80 50'000 h

Choice of three optical systems for a wide variety of applications

Suitable for emergency lighting

Dimmable digital DALI

### MOUNTING ACCESSORIES

Pendant suspension, canopy, profile connector set, wall retainer set, blind cover for use in the case of partial mounting, mains connection kit, end caps set

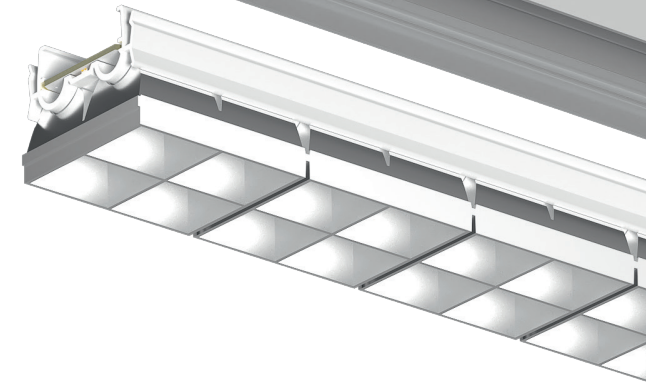
## C-LED

Microprismatic C-LED optics, optimum glare control for standard-compliant office lighting



## LED

Rollable diffuser with RUN Technology – can be shortened on site; attractive, shadow-free, continuous lines of light of up to 24 m



## BOOST LED

Aesthetically pleasing louvre optics, optimised for application with LEDs, extremely efficient, high direct component for standard-compliant office lighting. Each of the light-emitting diodes is fitted with its own optics to allow precise control of the light. The colour tolerance of 2 SDCM (MacAdam) guarantees visual uniformity between two lenses or two luminaires.